

M::NODE BIO

Embrace the Future of Beauty with Our Revolutionary Formula !

CELLRESOME

# CELLRESOME vial II

## SKIN REJUVENATION SR II



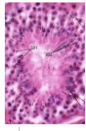
Rosa Centifolia Flower Water



Galactomyces Ferment Filtrate



Chamaecyparis Obtusa Water



Salmon Testis Exosomes



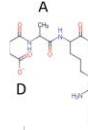
Milk Exosomes



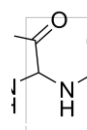
Centella



Asiatica Callus Extracellular Vesicles



Peptides



Allantoin



Hamamelis Virginiana



Caviar Extract



Mesembryanthemum Crystallinum Extract



Carica Papaya (Papaya) Fruit Extract



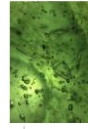
Propolis Extract



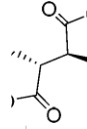
Chamaecyparis Obtusa Water



Hamamelis Virginiana (Witch Hazel) Leaf Extract



Xanthan gum



Hydroxyethylcellulose

M::NODE BIO



- MOISTURIZATION
- ANTIOXIDANT
- IMPROVE SKIN TONE
- IMPROVE SKIN TROUBLES
- BRIGHTENING EFFECT
- INHIBITS MELANIN PIGMENTATION
- INCREASE WATER RETENTION
- WRINKLE IMPROVEMENT
- IMPROVE SKIN ELASTICITY
- HIGH DURABILITY AND SAFE

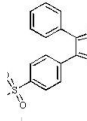


# CELLRESOME vial II

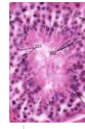
## HAIR GROWTH HG II



Chamaecyparis Obtusa Water



Polysorbate 80



Salmon Testis Exosomes



Milk Exosomes



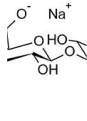
Centella Asiatica Callus Extra cellular Vesicles



Peptides



Sodium DNA



Sodium Hyaluronate



Caviar Extract



Houttuynia Cordata Extract



Glycine Soja (Soybean) Seed Extract



Urtica Dioica (Nettle) Leaf Extract



Hippophae Rhamnoides Extract



Citrus Limon (Lemon) Fruit Extract



Verbena Officinalis Extract



Propolis Extract



Carica Papaya (Papaya) Fruit Extract



Mesembryanthemum Crystal linum Extract

M::NODE BIO

CELLRESOME HG

II

has been developed for scalp care by combining the clinical expertise of Centumcore Clinic Dr. Shin & Steve / M::NODE BIO Co.,Ltd

INCREASED HAIR THICKNESS  
 INHIBITION OF HAIR LOSS SYMPTOMS  
 PROMOTION OF HAIR GROWTH  
 IMPROVEMENT OF HAIR GROWTH CYCLE  
 STRENGTHEN HAIR



## *Instructions :: standard*

### **Step 1**

Add vial 2 into vial 1, gently shake, and let it sit for 5 minutes.



Fully open two vials and add the highly concentrated essence from vial 2 into vial 1. The solution forms with viscosity due to the inclusion of low molecular weight hyaluronic acid powder.

### **Step 2**

Once the powder in vial 1 is completely dissolved, apply to the area using MTS.



It is recommended to use a disposable syringe or a dropper for single use. The appropriate amount (1 session, 2ml ~ 2.5ml) is administered using a syringe or dropper with MTS, which can be divided for use over 2-3 sessions.

\*After 15 minutes, if fully absorbed, re-administration is possible or refrigerate for use the next day. It is recommended to use the entire amount within 52 hours.

---

## *Instructions :: advanced method at the clinic*

### **Step 1**

Prepare as per the standard instructions. Apply numbing cream and store in the refrigerator during the waiting period and throughout Step 2 procedure.

### **Step 2**

Fractional laser peeling with low energy or needle RF treatment at depths of 0.5mm to 2mm.

\* The parameters can be adjusted variably depending on the skin condition of the patient

### **Step 3**

Immediately apply the cellresome solution, which has been stored in the refrigerator, to the treated area in Step 2 right after the procedure

If a sensation of heat is felt due to performing Step 2 procedure with high energy, wait until the skin surface cools down before applying.

After approximately 10 minutes, it is available to reapply the solution once it has been fully absorbed.

---

In the field of medical clinical research, cosmetic research and development, stem cell research and development, practitioners gather to provide cutting-edge medical services with state-of-the-art technology and expertise.

# M::Node Bio.

## Imported & Distributed by

HEALTHVANTAGE SDN BHD

15-13A Stellar Suites, Jalan 4/7,  
Bandar Puteri, Puchong, 47100  
Selangor, Malaysia.

Tel: 03-5022 5988

[www.healthvantage.com.my](http://www.healthvantage.com.my)  
[info@healthvantage.com.my](mailto:info@healthvantage.com.my)



**CENTUM CORE CLINIC**  
CORE PLASTIC SURGERY & DERMATOLOGY

**CELLRESOME SR**

**CELLRESOME HG**

**CELLRESOME FC**

**DERMAGRAPH**